

NPRM-1 & NPRM-2 Non-Penetrating Roof Mount Assembly

CAUTION - SHARP EDGES - WEAR GLOVES!

Supplied Components and Hardware:

- * 6 - Base Frames
- * 1 - Center Support Plate
- * 2 - 244 Flanges
- * 4 - Roof Mount Braces
- * 1 - NPRM Hardware Package
- * 1 - 244A Flange Hardware Package

1- Assemble one 244 Flange to the Center Support Plate using four 1/4-20 x 3/4" carriage Bolts, Lock washers and Hex Nuts. Make sure to assemble the Bolts with the Heads on the underside of the frame. Hex Nut should be on the top side of the frame. (See Figures 1 & 2).

2- Assemble Base Frame and Center Support Plate using twelve 1/4-20x5/8" carriage Bolts, Lock washers and Hex Nuts. Make sure to assemble the Bolts with the Heads on the underside of the frame. Hex Nut should be on the top side of the frame. (See Figures 1 & 2).

3- Assemble the four (4) Braces to the upper support flange using four 1/4-20x3/4 Hex Head Bolts, Lock washers and Nuts.

4- Assemble the other end of the braces to the base frame using the four (4) 1/4-20 x 1/2" Hex Head Bolts, Lock washers, and Nuts (See Figures).

5- Insert Bolts into upper and lower flange (see instruction sheet #390150).

6- Slide the mast (not included) into position and tighten securely. Tighten the assembly securely and weigh down appropriately. The NPRM-1 & 2 will accept 12-16"x8" or 8-12"x12" concrete blocks.

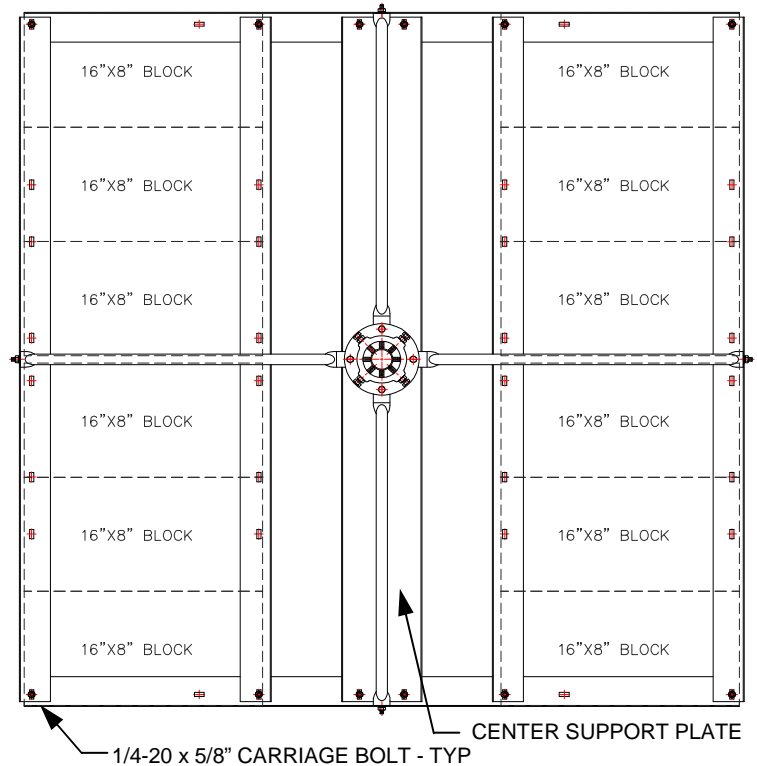


Figure 1 (Top View)



1/4-20 x 1/2" HEX HD BOLT

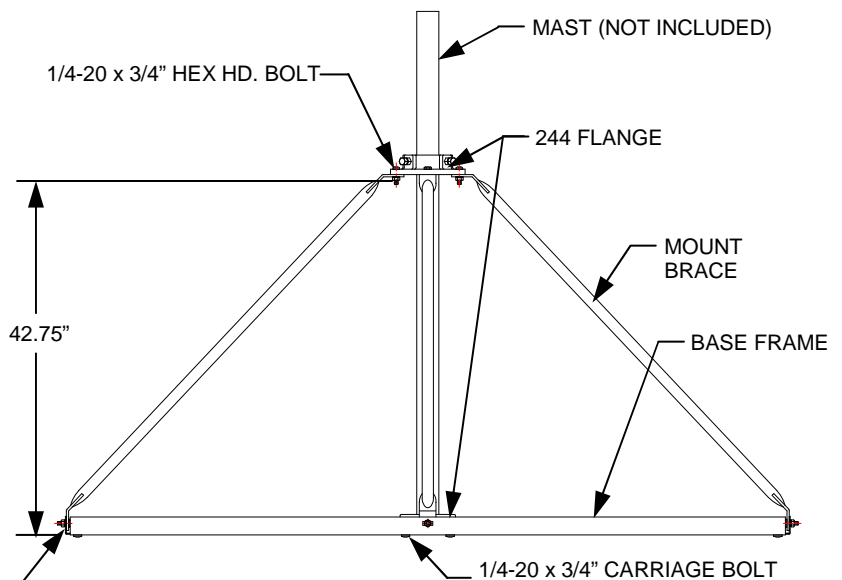


Figure 2 (Front View)