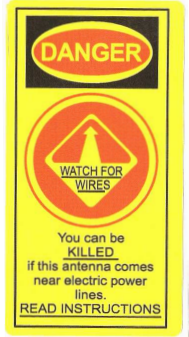


NPRM-3 & 4

Non-Penetrating Roof Mount Assembly

CAUTION - SHARP EDGES - WEAR GLOVES!



Supplied Components and Hardware:

- * 8 - Base Frames
- * 4 - Center Brackets
- * 4 - Roof Mount Braces
- * 1 - Hardware Package

1- Assemble Base Frames using twelve (12) 1/4-20x5/8" carriage Bolts, Lock washers and Hex Nuts. **Make sure to assemble the Bolts with the Heads on the under-side of the frame.** See Figure 1 for inner frame location based on using 8"x16" or 12"x12" concrete blocks.

2- Assemble one 5/16-18x1-1/4" bolt and two nuts (one nut on the outside of the center bracket and one inside) to each center bracket prior to step 3. (See Figure 2).

3- Assemble the four (4) Braces to the center brackets using four 1/4-20x3/4" hex head bolts, Lock washers and Nuts. (See Figure 2).

4- Assemble the other end of the braces to the base frame using four (4) 1/4-20 x 3/4" Hex Head Bolts, Lock washers, and Nuts (See Figure 3).

5- Assemble mast mounting bracket to base frame using (2) 1/4-20 x 5/8" carriage bolts, lock washers and nuts. Assemble 2 1/2" u-bolt, lock washers and nuts to mast mounting bracket. Slide mast (not included) through u-bolt and tighten nuts. Tighten the center bracket bolts and weigh down appropriately. These units will accept 12-16"x8" or 8-12"x12" concrete blocks.

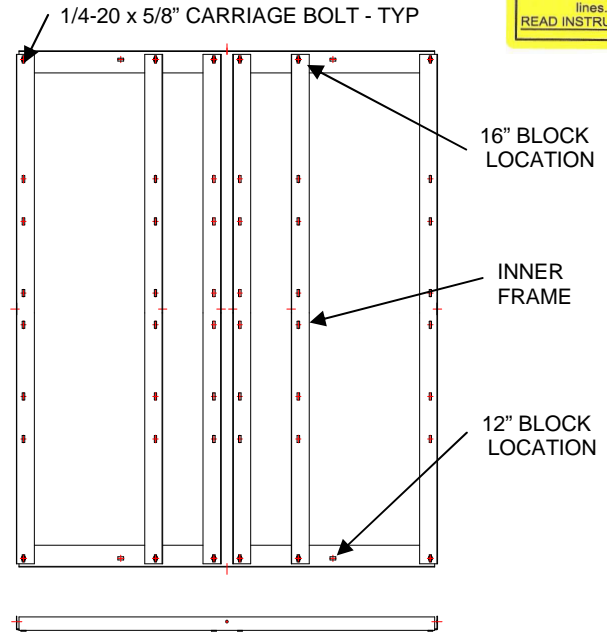


Figure 1 (Top & Side View)

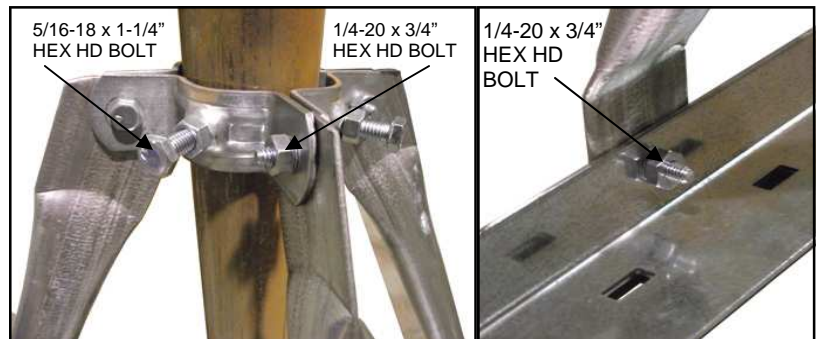
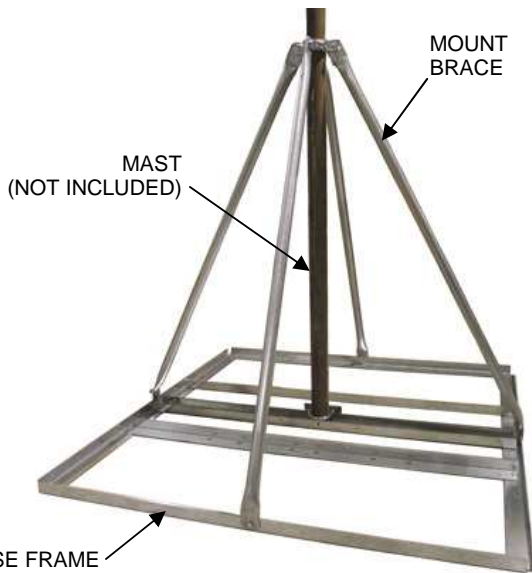


Figure 2 (Center Brackets)

Figure 3 (Brace Detail)

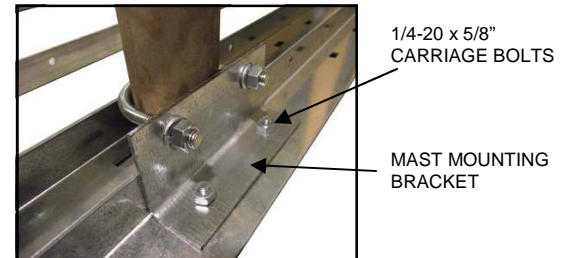


Figure 4 (Mast Mount Detail)