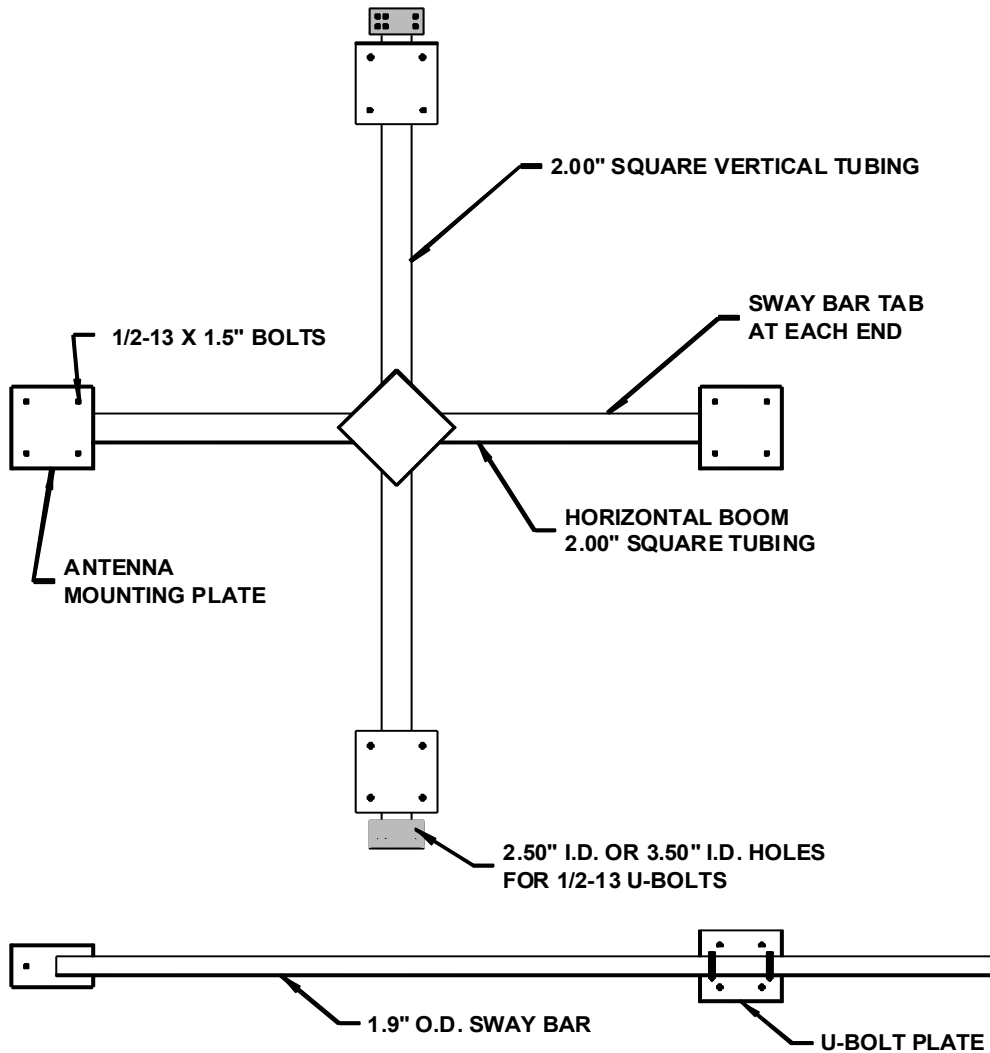


WL(UHF)/DQ Diamond Quad



(Sway Bar is not required if tower leg is over 2.00")

CHANNEL	HORIZONTAL BOOM LENGTH	VERTICAL BOOM LENGTH	INSTALLED WEIGHT
14-35	42"	42"	80 LBS
30-69	36"	36"	85 LBS
CUSTOM _____	_____	_____	_____

- Note:**
1. All antennas MUST be mounted with cable on the lower antenna boom.
 2. A qualified structural engineer should be consulted prior to mounting an antenna on a tower or support structure.