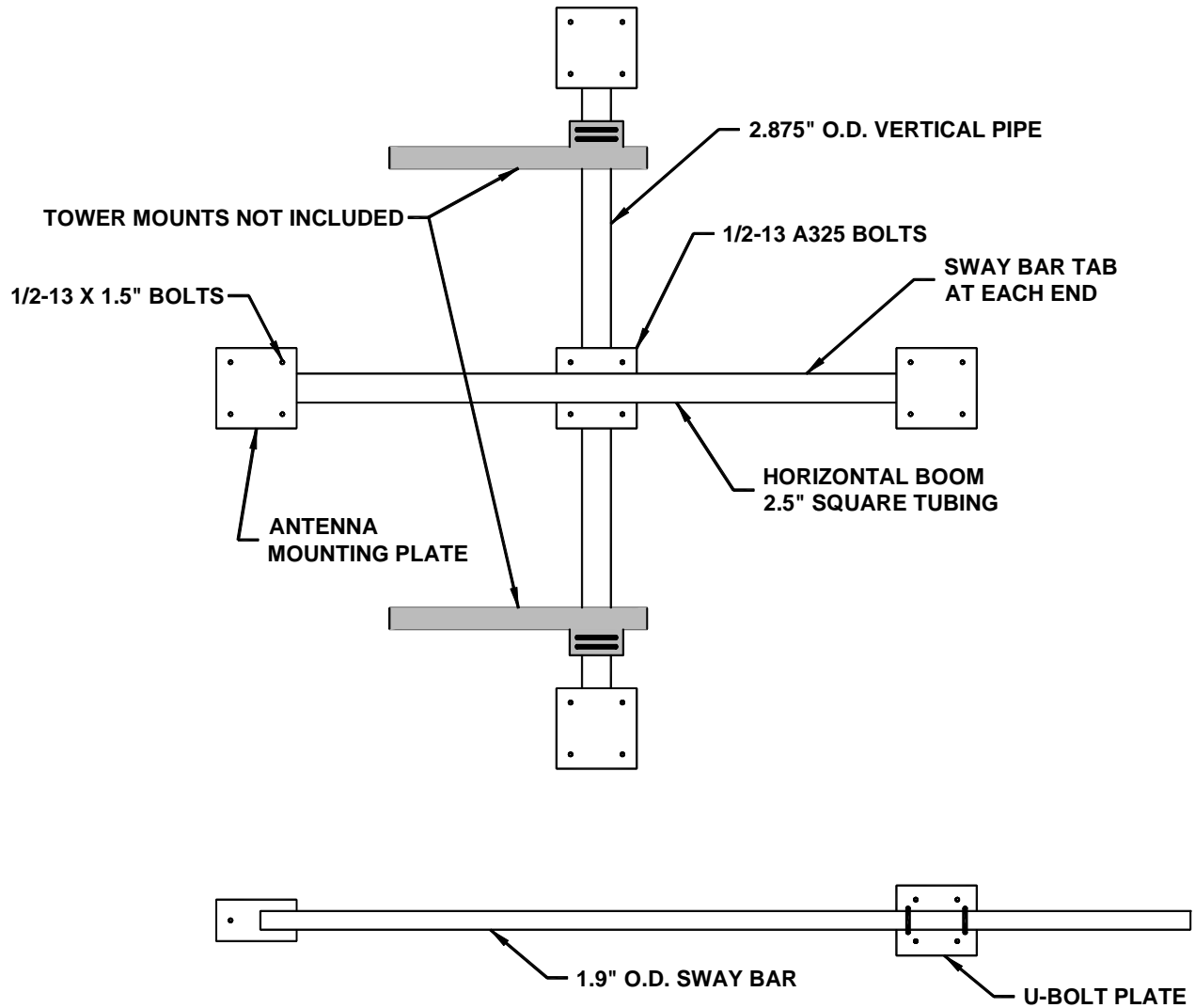


## WL(7-13)/DQ Diamond Quad



CHANNEL	HORIZONTAL BOOM LENGTH	VERTICAL BOOM LENGTH	INSTALLED WEIGHT
WL7-13	108"	108"	230 LBS
CUSTOM _____	_____	_____	_____

- Note:**
1. All antennas **MUST** be mounted with cable on the lower antenna boom.
  2. A qualified structural engineer should be consulted prior to mounting an antenna on a tower or support structure.