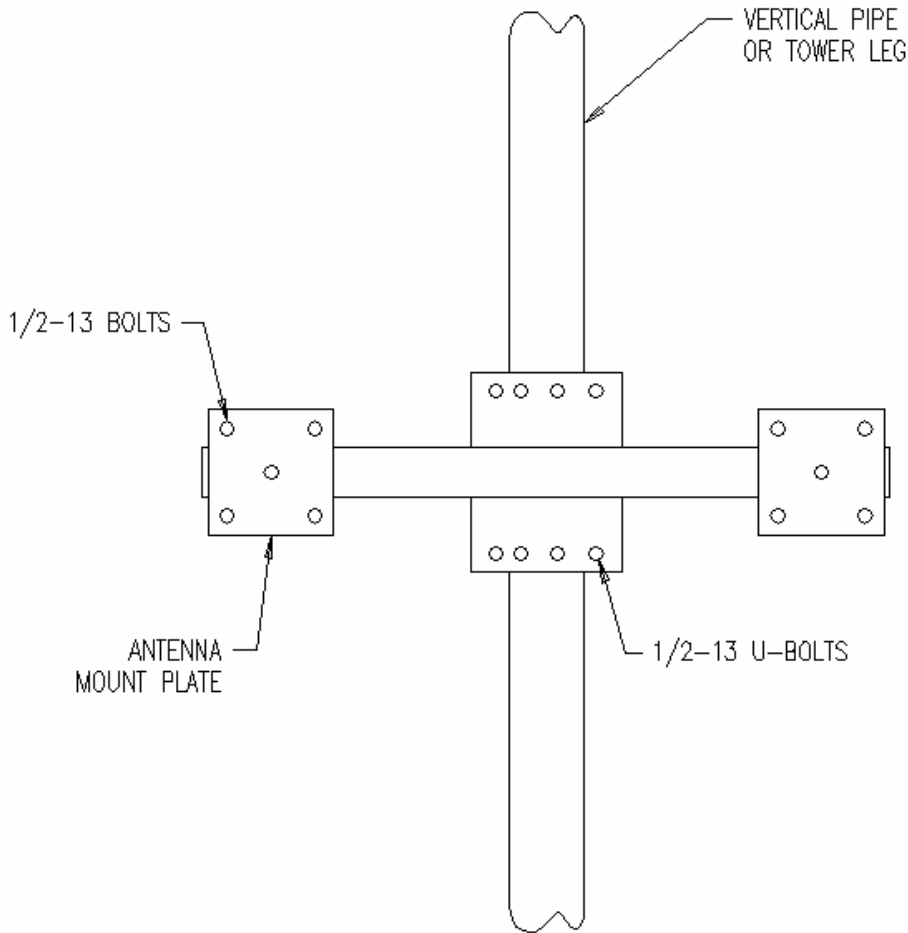


## WL14-69/HP UHF Horizontal Pair



CHANNEL	HORIZONTAL BOOM LENGTH	INSTALLED WEIGHT
14-69	27.5"	38 LBS
CUSTOM		

- Note:**
1. All antennas **MUST** be mounted with cable on the lower antenna boom.
  2. A qualified structural engineer should be consulted prior to mounting an antenna on a tower or support structure.