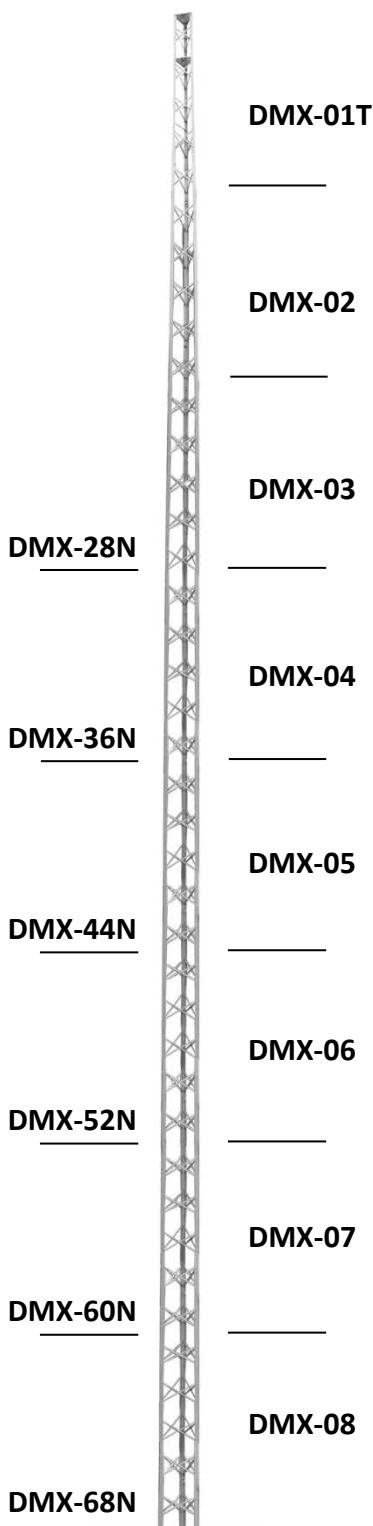


# DMX Standard, Medium and Heavy Duty Towers



## Features

- Attractive *tapered* design.
- “X” brace with beaded channel leg
- Enhancements made to both leg profile and taper allow for easier installation and improved tower structure
- High strength galvanized steel construction
- Designed to withhold impact load of a climber in case of a fall in accordance with CSA-S37-13. See installation instructions for more information.
- Eight foot sections
- Compact shipping package
- Free standing installation
- Ideal for amateur radio and industrial/commercial communications applications
- Climb shields recommended

## Standard Tower Packages

DMX towers are packaged complete with CBS concrete base stubs, DM mast, top plate, rotor plate, TMCA clamp assembly and all necessary hardware. Height includes mast.

## Medium and Heavy Duty Tower Packages

DMX Medium and Heavy Duty towers are packaged complete with CBS concrete base stubs, top plate, rotor plate, 244A mast clamp assembly and all necessary hardware.

## Tower Models

<b>DMX-28N</b> 28' (8.53 m)	<b>DMXMD-32N</b> 32' (9.75 m)
<b>DMX-36N</b> 36' (10.97 m)	<b>DMXMD-40N</b> 40' (12.19 m)
<b>DMX-44N</b> 44' (13.41 m)	<b>DMXMD-48N</b> 48' (14.63 m)
<b>DMX-52N</b> 52' (15.85 m)	<b>DMXMD-56N</b> 56' (17.07 m)
<b>DMX-60N</b> 60' (18.29 m)	<b>DMXHD-32N</b> 32' (9.75 m)
<b>DMX-68N</b> 68' (20.73 m)	<b>DMXHD-40N</b> 40' (12.19 m)
	<b>DMXHD-48N</b> 48' (14.63 m)

**Note:** A concrete base is required. See installation instructions for more information.

WADE ANTENNA'S ONGOING POLICY OF CONTINUING DEVELOPMENT MAY RESULT IN SPECIFICATION CHANGES TO ITS PRODUCTS

# DMX Tower Load Limits

A qualified structural engineer should be consulted prior to installing any tower or supporting structure.

Our published installation guidelines are for standard towers and mounting devices as specified. These guidelines are based on assumed soil conditions (190KPa or 4000 PSF) that may or may not exist in your area.

## Load Limits

DMX Standard Duty Towers are designed to support up to 3 square feet (0.28 m<sup>2</sup>) projected wind area.

DMXMD Medium Duty Towers are designed to support up to 6 square feet (0.56 m<sup>2</sup>) projected wind area.

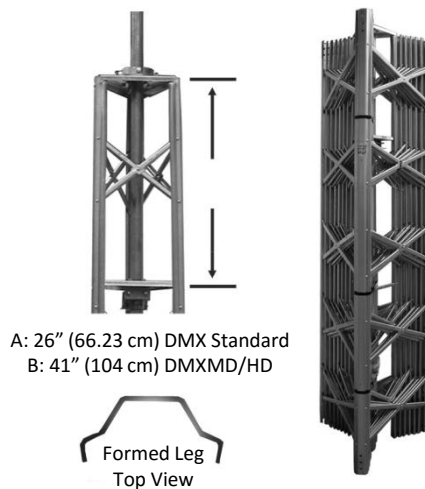
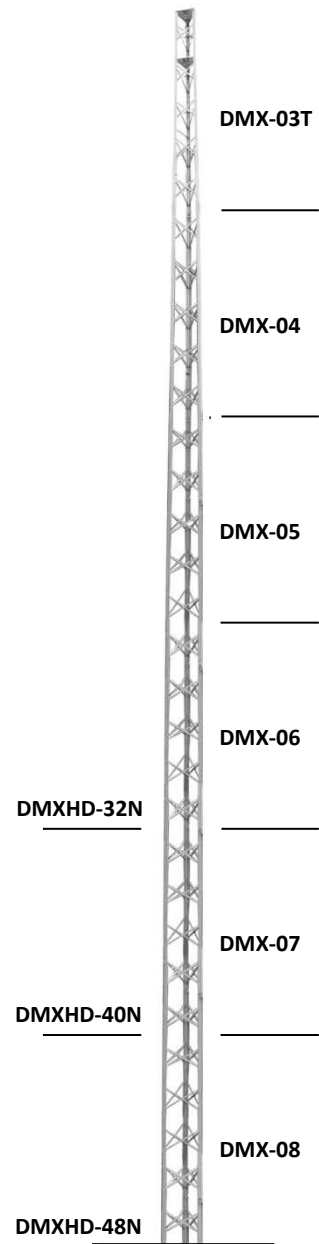
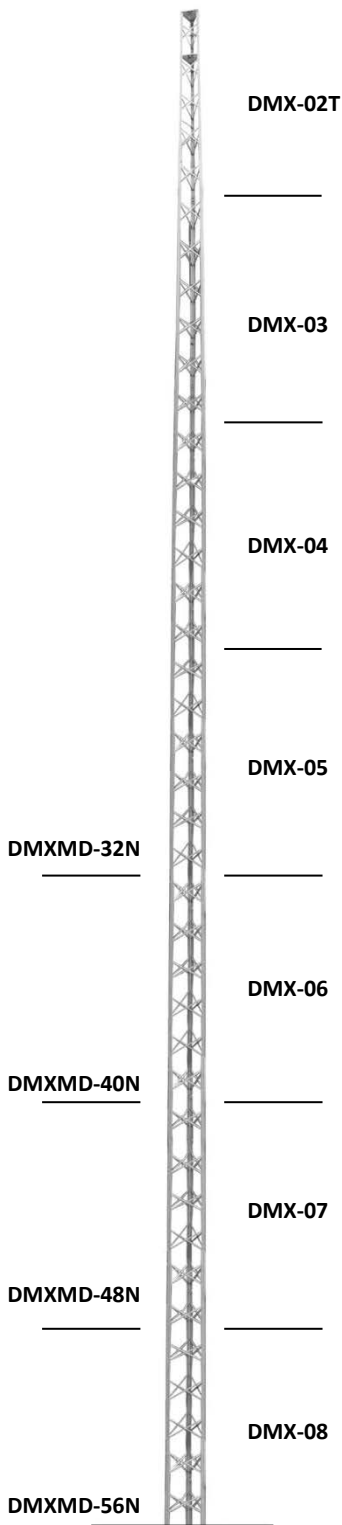
DMXHD Heavy Duty Towers are designed to support up to 9 square feet (0.84 m<sup>2</sup>) projected wind area.

**Note:** For tower accessories or parts that may be ordered separately, please refer to DMX parts and accessories

### WARNING!

Guy wires must be used for larger loads or if straight sections are added for extra height. However, these configurations have not been tested to CSA standards CSA-S16-09 and CSA-S37-13 for loadings larger than what is indicated above.

**Note:** For tower accessories or parts that may be ordered separately, please refer to **DMX Tower Parts**.



WADE ANTENNA'S ONGOING POLICY OF CONTINUING DEVELOPMENT MAY RESULT IN SPECIFICATION CHANGES TO ITS PRODUCTS

★ OUR NEW DMX TOWERS HAVE BEEN ENHANCED IN BOTH LEG PROFILE AND TAPER. THIS FACILITATES IN AN EASIER INSTALLATION AND IMPROVED TOWER STRUCTURE.

**BBMB** Cast aluminum ball bearing. Mast bearing accepts up to 2" (5.08 cm) masts.

**244A** Cast aluminum mast clamp for up to 2½" (6.35 cm) masts.

**DMXHB** Universal house bracket included with DMXB series but designed to fit all DMX sections. 1" (2.54cm) x 30" (76.2cm) arms.

**HUB 3-6** Optional hinge-up base. Threaded rod allows vertical adjustments. Fits DMX-03 to DMX-06 sections.

**TMCA** Replacement mast clamp assemblies with sleeve bearing.

**BP2S** Heavy gauge base plate fits DMX-02 or DMX-02S sections

**DM Mast** 1½" (3.81 cm) 16 ga. x 8' (2.44 m) mast as supplied in DMX and DMXB.

**Base Stubs** Set of three 4' (1.22 m) long, as shown below.

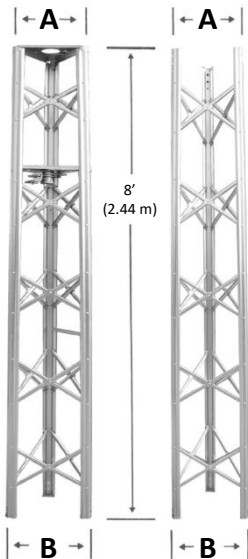
**GS123** Guy station fits DMX-01T to DMX-03 sections.

- CBS-03** Fits DMX-03
- CBS-04** Fits DMX-04
- CBS-05** Fits DMX-05
- CBS-06** Fits DMX-06
- CBS-07** Fits DMX-07
- CBS-08** Fits DMX-08

**GS456** Guy station fits DMX-04 to DMX-06 sections.

	<b>A</b>	<b>B</b>
<b>DMX-01T</b>	10 5/16" (26.19 cm)	12 11/16" (32.23 cm)
<b>DMX-02</b>	12 7/8" (32.70 cm)	14 7/8" (37.78 cm)
<b>DMX-02S</b>	15" (38.10 cm)	14 7/8" (37.78 cm)
<b>DMX-02T</b>	12 7/8" (32.70 cm)	14 7/8" (37.78 cm)
<b>DMX-03</b>	15 1/8" (38.42 cm)	16 15/16" (43.02 cm)
<b>DMX-03T</b>	15 1/8" (38.42 cm)	16 15/16" (43.02 cm)
<b>DMX-04</b>	17 3/8" (44.13 cm)	19 1/4" (48.90 cm)
<b>DMX-04T</b>	17 3/8" (44.13 cm)	19 1/4" (48.90 cm)
<b>DMX-04S</b>	19 11/16" (50.01 cm)	19 1/4" (48.90 cm)
<b>DMX-05</b>	19 1/2" (49.53 cm)	21 5/8" (54.93 cm)
<b>DMX-05S</b>	22 3/16" (56.36 cm)	21 15/16" (55.22 cm)
<b>DMX-06</b>	22" (55.88 cm)	24 3/16" (61.44 cm)
<b>DMX-07</b>	24 1/4" (62.87 cm)	26 11/16" (67.79 cm)
<b>DMX-08</b>	27 1/16" (68.74 cm)	29 1/4" (74.30 cm)

**\*\* Climb shields and hardware kits are also available**



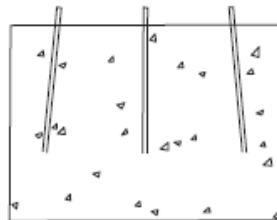
**GS123  
GS456**



**TMCA**



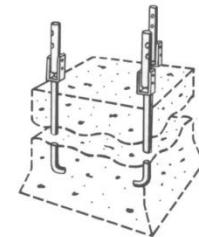
**244A**



**CBS-03 CBS-06  
CBS-04 CBS-07  
CBS-05 CBS-08**



**BBMB**



**HUB 3-6**

WADE ANTENNA'S ONGOING POLICY OF CONTINUING DEVELOPMENT MAY RESULT IN SPECIFICATION CHANGES TO ITS PRODUCTS