

Features

- Precision swaged legs for perfect fit
- “Everdur” welded for high strength
- Sleeve bearing for masts up to 1.66” (4.2 cm) diameter
- Legs and braces “Galvanized” steel
- Rotor plate for longer rotor life
- Designed to withstand impact load of a climber in case of a fall in accordance with CSA-S37-13. See installation instructions for more information.*
- Each section subjected to pressure testing to ensure all weld points pass the minimum strength requirements. The result is a safe and reliable tower - look for dimple on braces

** Load Limits

Designed to support equipment up to 3 square ft. (0.28 m²) projected wind area, mounted not more than 2 sections above house bracket.

Caution: Guy wires must be used for larger loads or greater heights above house bracket. However, the towers have not been tested to CSA standards CSA-S16 and CSA-S37-13 for loading larger than what is indicated above.

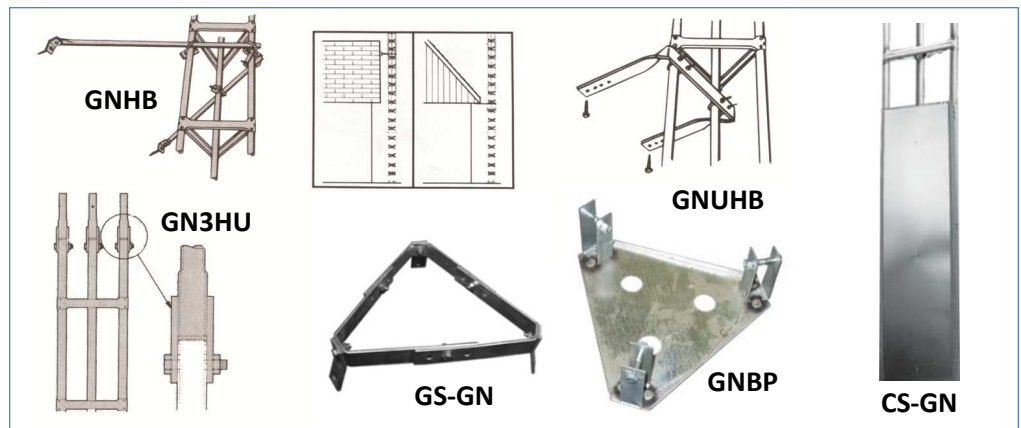
Sections

GN18T	18 gauge top section	9'6" (2.90 m).
GN18S	18 gauge straight section	10'0" (3.05 m).
GN16T	16 gauge top section	9'6" (2.90 m).
GN16S	16 gauge straight section	10'0" (3.05 m).

Note: All sections complete with necessary nuts and bolts. Top sections include top bearing set screw and lower mast clamp assembly.

Accessories

GNHB	Universal house bracket 1" O.D. (2.54 cm) x 3' (0.91 m) arms.
GNUHB	Economical “U” house bracket.
GNBP	16 gauge base plate.
DMBS	Galvanized steel drive stakes. Set of three. 1 1/4" (3.2 cm) x 3' (0.91 m).
GN3HU	3' hinge-up base.
CS-GN	Climb Shield for GN Tower.
GS-GN	Guy Station for GN Tower.



* Towers have not been tested to be in compliance with other sections of CSA-S37-13.

** Tower load limits are based on survival, and cannot be stamped by a licensed engineer

WADE ANTENNA'S ONGOING POLICY OF CONTINUING DEVELOPMENT MAY RESULT IN SPECIFICATION CHANGES TO ITS PRODUCTS