

Features

- Attractive *tapered* design.
- “X” brace with beaded channel leg
- Enhancements made to both leg profile and taper allow for easier installation and improved tower structure
- High strength galvanized steel construction
- Designed to withhold impact load of a climber in case of a fall in accordance with CSA-S37-13. See installation instructions for more information.*
- Sections 5 to 8 are 12 gauge, 1 to 4 are 16 gauge galvanized steel
- Eight foot sections
- Compact shipping package
- Free standing installation
- Ideal for amateur radio and industrial/commercial communications applications
- Climb shields recommended

Standard Tower Packages

DMX towers are packaged complete with CBS concrete base stubs, DM mast, top plate, rotor plate, TMCA clamp assembly and all necessary hardware. Height includes mast.

Medium and Heavy Duty Tower Packages

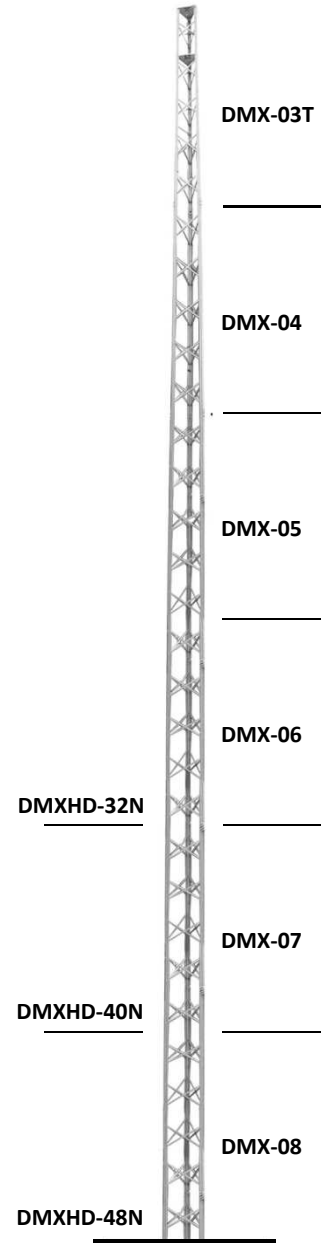
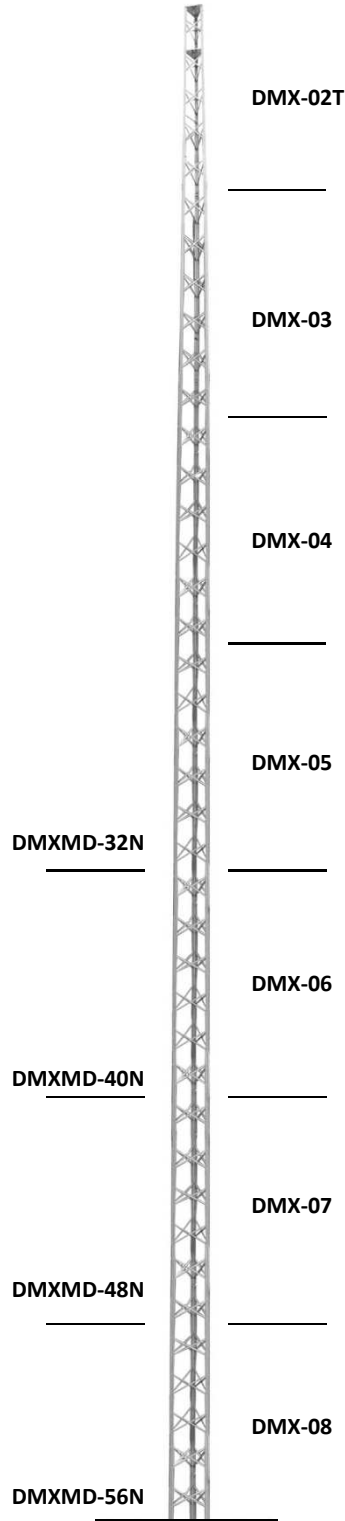
DMX Medium and Heavy Duty towers are packaged complete with CBS concrete base stubs, top plate, rotor plate, 244A mast clamp assembly and all necessary hardware.

Tower Models

- | | |
|------------------------------|--------------------------------|
| DMX-28N 28’ (8.53 m) | DMXMD-32N 32’ (9.75 m) |
| DMX-36N 36’ (10.97 m) | DMXMD-40N 40’ (12.19 m) |
| DMX-44N 44’ (13.41 m) | DMXMD-48N 48’ (14.63 m) |
| DMX-52N 52’ (15.85 m) | DMXMD-56N 56’ (17.07 m) |
| DMX-60N 60’ (18.29 m) | DMXH-32N 32’ (9.75 m) |
| DMX-68N 68’ (20.73 m) | DMXH-40N 40’ (12.19 m) |
| | DMXH-48N 48’ (14.63 m) |

Note: A concrete base is required. See installation instructions for more information.

WADE ANTENNA’S ONGOING POLICY OF CONTINUING DEVELOPMENT MAY RESULT IN SPECIFICATION CHANGES TO ITS PRODUCTS



A qualified structural engineer should be consulted prior to installing any tower or supporting structure.

Our published installation guidelines are for standard towers and mounting devices as specified. These guidelines are based on assumed soil conditions (190KPa or 4000 PSF) that may or may not exist in your area.

**** Load Limits**

DMX Standard Duty Towers are designed to support up to 3 square feet (0.28 m²) projected wind area.

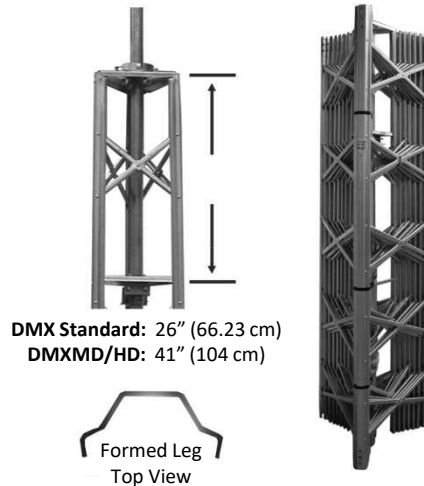
DMXMD Medium Duty Towers are designed to support up to 6 square feet (0.56 m²) projected wind area.

DMXHD Heavy Duty Towers are designed to support up to 9 square feet (0.84 m²) projected wind area.

WARNING!

Guy wires must be used for larger loads or if straight sections are added for extra height. However, these configurations have not been tested to CSA standards CSA-S16-09 and CSA-S37-13 for loadings larger than what is indicated above.

Note: For tower accessories or parts that may be ordered separately, please refer to **DMX Tower Parts**.



DMX Standard: 26" (66.23 cm)
DMXMD/HD: 41" (104 cm)

* Towers have not been tested to be in compliance with other sections of CSA-S37-13.
** Tower load limits are based on survival, and cannot be stamped by a licensed engineer

WADE ANTENNA'S ONGOING POLICY OF CONTINUING DEVELOPMENT MAY RESULT IN SPECIFICATION CHANGES TO ITS PRODUCTS

★ OUR NEW DMX TOWERS HAVE BEEN **ENHANCED** IN BOTH LEG PROFILE AND TAPER. THIS FACILITATES IN AN EASIER INSTALLATION AND IMPROVED TOWER STRUCTURE.

BBMB Cast aluminum ball bearing. Mast bearing accepts up to 2" (5.08 cm) masts.

244A Cast aluminum mast clamp for up to 2½" (6.35 cm) masts.

DMXHB Universal house bracket included with DMXB series but designed to fit all DMX sections. 1" (2.54cm) x 30" (76.2cm) arms.

HUB 3-6 Optional hinge-up base. Threaded rod allows vertical adjustments. Fits DMX-03 to DMX-06 sections.

TMCA Replacement mast clamp assemblies with sleeve bearing.

BP2S Heavy gauge base plate fits DMX-02 or DMX-02S sections

DM Mast 1½" (3.81 cm) 16 ga. x 8' (2.44 m) mast as supplied in DMX and DMXB.

Base Stubs Set of three 4' (1.22 m) long, as shown below.

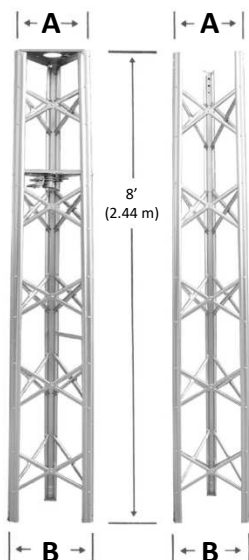
GS123 Guy station fits DMX-01T to DMX-03 sections.

- CBS-03** Fits DMX-03
- CBS-04** Fits DMX-04
- CBS-05** Fits DMX-05
- CBS-06** Fits DMX-06
- CBS-07** Fits DMX-07
- CBS-08** Fits DMX-08

GS456 Guy station fits DMX-04 to DMX-06 sections.

	A	B
DMX-01T	10 5/16" (26.19 cm)	12 11/16" (32.23 cm)
DMX-02	12 7/8" (32.70 cm)	14 7/8" (37.78 cm)
DMX-02S	15" (38.10 cm)	14 7/8" (37.78 cm)
DMX-02T	12 7/8" (32.70 cm)	14 7/8" (37.78 cm)
DMX-03	15 1/8" (38.42 cm)	16 15/16" (43.02 cm)
DMX-03T	15 1/8" (38.42 cm)	16 15/16" (43.02 cm)
DMX-04	17 3/8" (44.13 cm)	19 1/4" (48.90 cm)
DMX-04T	17 3/8" (44.13 cm)	19 1/4" (48.90 cm)
DMX-04S	19 11/16" (50.01 cm)	19 1/4" (48.90 cm)
DMX-05	19 1/2" (49.53 cm)	21 5/8" (54.93 cm)
DMX-05S	22 3/16" (56.36 cm)	21 15/16" (55.22 cm)
DMX-06	22" (55.88 cm)	24 3/16" (61.44 cm)
DMX-07	24 1/4" (62.87 cm)	26 11/16" (67.79 cm)
DMX-08	27 1/16" (68.74 cm)	29 1/4" (74.30 cm)

**** Climb shields and hardware kits are also available**



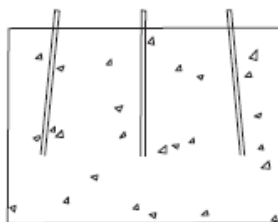
**GS123
GS456**



TMCA



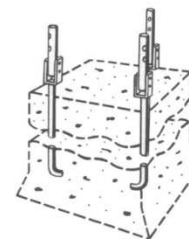
244A



**CBS-03 CBS-06
CBS-04 CBS-07
CBS-05 CBS-08**



BBMB



HUB 3-6

WADE ANTENNA'S ONGOING POLICY OF CONTINUING DEVELOPMENT MAY RESULT IN SPECIFICATION CHANGES TO ITS PRODUCTS