

LT SERIES

Lighting towers are available in the following four series. Load figures given are for lights mounted at the top of the tower, and include the weight of mast and fittings. Each series designates the load carrying capabilities and maximum height. Our new Towers have been enhanced in both leg profile and taper facilitating an easier installation and improved tower structure.

NOTE: All ballasts should be mounted at base of tower.

Model	Series No.	Max. Height	* Max. Load
LT	1	64'	3 sq. ft. projected area - 60 lbs of weight
LT	2	56'	6 sq. ft. projected area - 120 lbs of weight
LT	3	48'	9 sq. ft. projected area - 180 lbs of weight
LT	4	40'	12 sq. ft. projected area - 240 lbs of weight

For Parks and Recreational Areas, Farms, Industry, Parking Lots, and many other applications.

CONSTRUCTION

Towers are manufactured in 8 ft. sections, which nest compactly for shipping and ease of handling and storage. Bolts, nuts and lockwashers are heat treated and zinc plated.

TOP SECTIONS

The top section of each tower comes complete with 2 heavy gauge galvanized mast clamp plates. Each plate has a heavy duty cast aluminum mast clamp that will accept masts up to 2 1/2" O.D. (see figure below)

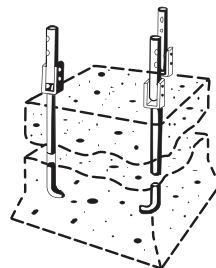
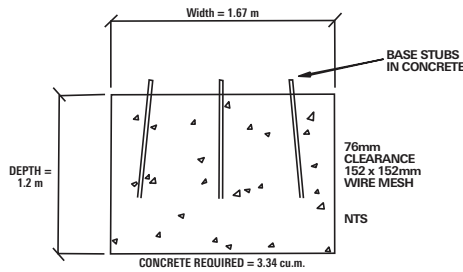
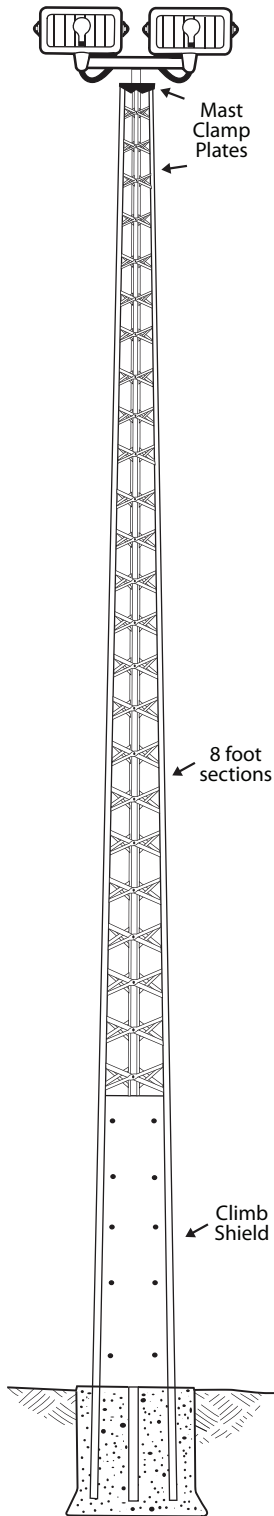
BASES - CONCRETE

Each tower is shipped with 3 concrete-base stubs. It is recommended that a square hole be dug 4 feet deep and 16" wider than the base section of the tower. Hinge-up base stubs are also available for use in concrete. These are recommended where facilities are available for raising or lowering complete tower. On parking lot installations, all concrete bases should extend past bumper height.

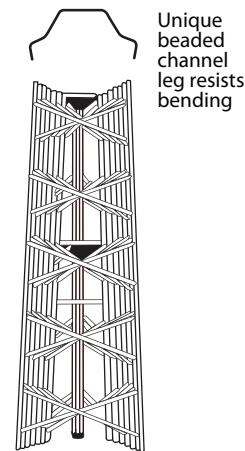
CLIMB SHIELDS

(Also used to enclose ballasts)
Shields are manufactured from galvanized sheet and are fastened to the braces with sheet metal screw. Shields are 8 feet high.

Wade's LT Towers are designed to withhold impact load of a climber in case of a fall in accordance with CSA-S37-13. See installation instructions for more information.**

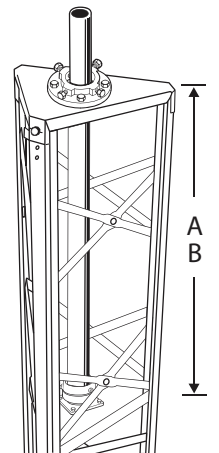


Hinge-up Base



Compact Tower Package

- A** 26" Sections 01T, 02T
- B** 41" Sections 03T, 04T

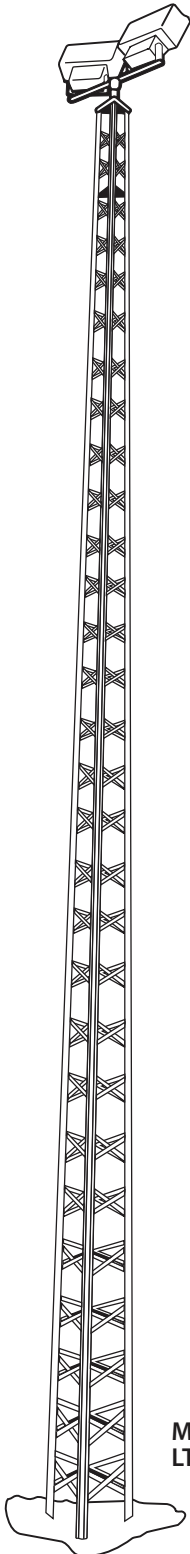


Top of tower with mast clamp plate installed

* Tower load limits are based on survival, and cannot be stamped by a licensed engineer
** Towers have not been tested to be in compliance with other sections of CSA-S37-13

LT SERIES

LT Series Towers are shipped complete with 8 foot tower sections, 2 mast clamp plates installed in top section, 3 cement base stubs, plus special bolts, nuts and washers.



Model
LT-3-48N

MODEL	HEIGHT	SECTIONS SUPPLIED	WEIGHT (LBS)
LT-1-24N	24'	LTX-01T, LTX-02, LTX-03	86
LT-1-32N	32'	LTX-01T, LTX-02, LTX-03, LTX-04	118
LT-1-40N	40'	LTX-01T, LTX-02, LTX-03, LTX-04, LTX-05	165
LT-1-48N	48'	LTX-01T, LTX-02, LTX-03, LTX-04, LTX-05, LTX-06	223
LT-1-56N	56'	LTX-01T, LTX-02, LTX-03, LTX-04, LTX-05, LTX-06, LTX-07	291
LT-1-64N	64'	LTX-01T, LTX-02, LTX-03, LTX-04, LTX-05, LTX-06, LTX-07, LTX-08	359
LT-2-24N	24'	LTX-02T, LTX-03, LTX-04	97
LT-2-32N	32'	LTX-02T, LTX-03, LTX-04, LTX-05	144
LT-2-40N	40'	LTX-02T, LTX-03, LTX-04, LTX-05, LTX-06	202
LT-2-48N	48'	LTX-02T, LTX-03, LTX-04, LTX-05, LTX-06, LTX-07	270
LT-2-56N	56'	LTX-02T, LTX-03, LTX-04, LTX-05, LTX-06, LTX-07, LTX-08	338
LT-3-24N	24'	LTX-03T, LTX-04, LTX-05	124
LT-3-32N	32'	LTX-03T, LTX-04, LTX-05, LTX-06	182
LT-3-40N	40'	LTX-03T, LTX-04, LTX-05, LTX-06, LTX-07	250
LT-3-48N	48'	LTX-03T, LTX-04, LTX-05, LTX-06, LTX-07, LTX-08	318
LT-4-24N	24'	LTX-04T, LTX-05, LTX-06	158
LT-4-32N	32'	LTX-04T, LTX-05, LTX-06, LTX-07	226
LT-4-40N	40'	LTX-04T, LTX-05, LTX-06, LTX-07, LTX-08	294

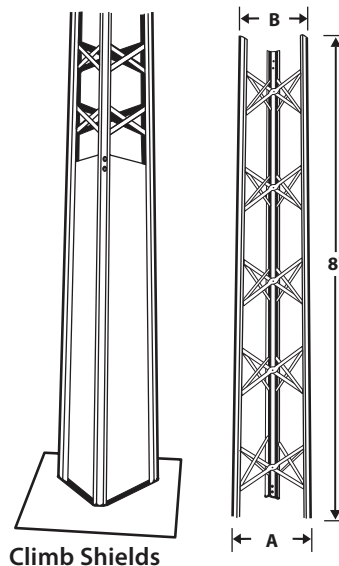
SPECIFICATIONS OF SECTIONS

SECTION NO .	LEG GAUGE	CROSS BRACE GAUGE	"A" (IN .)	"B" (IN .)	RIVET DIA (IN .)	WEIGHT IN LBS
LTX-01T	16	18	12 ½	10	¾	26
LTX-02	16	18	14 ¾	12 ¾	¾	23
LTX-02T	16	18	14 ¾	12 ¾	¾	28
LTX-03	16	18	17	15	¾	26
LTX-03T	16	18	17	15	¾	34
LTX-04	16	16	19 ½	17 ½	¾	31
LTX-04T	16	16	19 ½	17 ½	¾	41
LTX-05	12	14	22	19 ¾	¾	46
LTX-06	12	14	24 ¾	22 ¾	¾	55
LTX-07	12	14	26 ¾	24 ¾	¾	63
LTX-08	12	14	29 ¾	27 ¼	¾	68

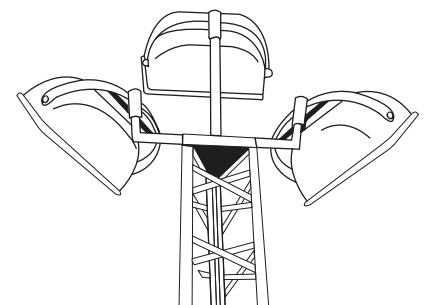
ACCESSORIES

MODEL	HINGE - UP BASE FOR CONCRETE
HUB 3-6	Fit sections LTX-03 thru LTX-06
HUB 7-8	Fit sections LTX-07 and LTX-08
CLIMB SHIELDS	
CS-3	to fit LTX-03 section
CS-4	to fit LTX-04 section
CS-5	to fit LTX-05 section
CS-6	to fit LTX-06 section
CS-7	to fit LTX-07 section
CS-8	to fit LTX-08 section

Section numbers ending in "T" are top sections which have 2 mast clamp plates installed.



Climb Shields



Installing three lights on a Model LT-4-40N tower

CAUTION NOTICE

Please read carefully

Our published installation guidelines are for standard towers and mounting devices as specified. These guidelines are based on assumed soil and weather conditions that may, or may not exist in your area and on the assumption that no damage has occurred, or modifications are made to the tower or mounting device.

A qualified structural engineer should be consulted prior to installing any tower or supporting structure.



WARNING!

Survey your installation site **NOW** to prevent your antenna or support from coming in contact with overhead powerlines. Caution should be used when climbing towers and support structures.

FAILURE TO EXERCISE CAUTION MAY RESULT IN SERIOUS INJURY OR DEATH.