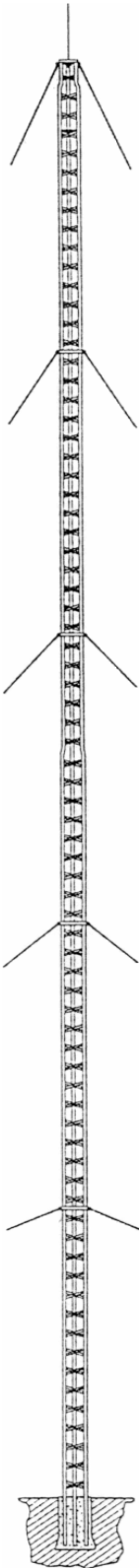


## GUY STATION INSTRUCTION SHEET

For Models GS-123 and GS-456 Guy Stations



**GS-123 is used for guying:**

Top of DMX-1T (with customer modification)

Top of DMX-2, DMX-2S and DMX-3 sections of tower.

**GS-456 is used for guying:**

Top of DMX-4, DMX-4S, DMX-5, DMX-5S and DMX-6 sections of tower.

**Models GS-123 and GS-456 both consist of 3 identical “V” shaped steel arms, 3 guy tabs and appropriate hardware.**

**For assembly on DMX-1T tower section,** loosely assemble “V” shaped arms together near top of tower on smallest setting using supplied bolts, nuts and washers. Place short end of guy tab between guy station and flat side of the tower leg. Slide guy station down the tower to obtain a tight fit. Drill 13/32” holes through the tower legs and assemble guy station to the tower using supplied hardware. Securely tighten all connections.

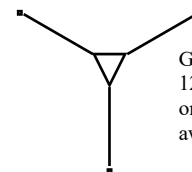
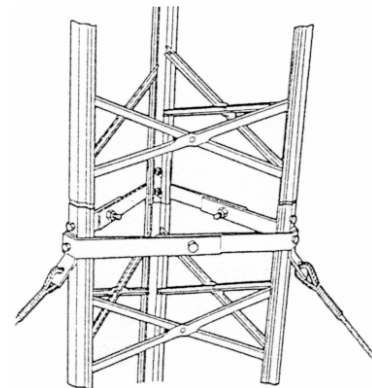
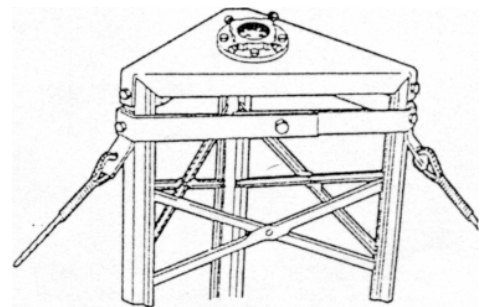
**For all other tower sections,** assemble bolt through “V” shaped arm into short end of guy tab and through appropriate hole in desired section of tower. Loosely assemble washer and nut to bolt. Insert bolt through the best matched set of holes on the long side of the “V” shaped arm and fasten using washer and nut. Once all fasteners have been loosely assembled go back and securely tighten them all.

*In all cases, tighten all bolts securely!*

**Light Guyed Towers, Models DMX and DMX-B,** can be guyed using regular TV guy wire No. 6x19 or 7x19.

**Commercial Guyed Towers** should be guyed using 3/16” or 1/4” O.D. heavy duty guy wire.

Attach guy station on the top of every third section from the base up, making sure to have a guy station at the top of the tower. Guy anchors should be 120° apart and about one half tower height away from base.



Guy anchors should be 120° apart and about one half tower height away from base.