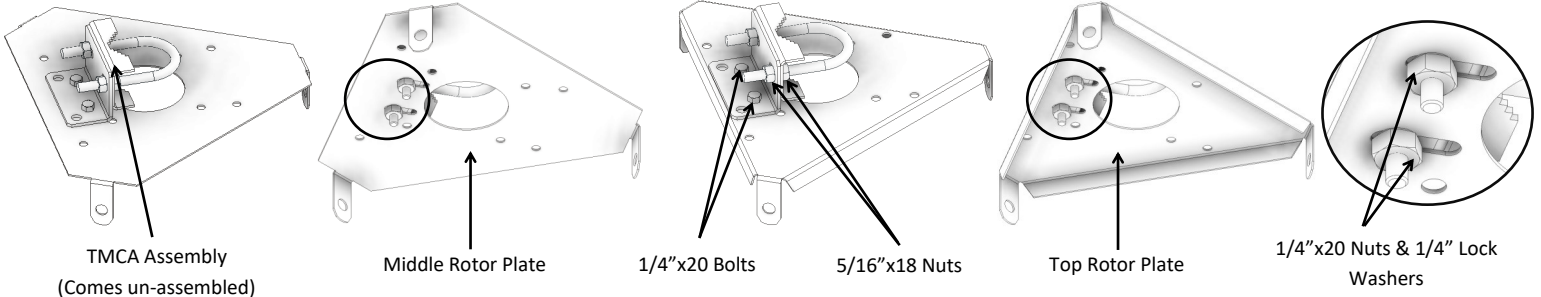
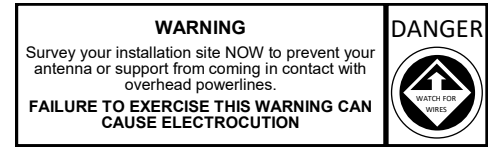


INSTALLATION INSTRUCTIONS FOR GN TOWER TOP KIT

Step 1: Attaching Mast Clamping Hardware

a) Attaching TMCA Mounting Hardware to the Rotor Plates

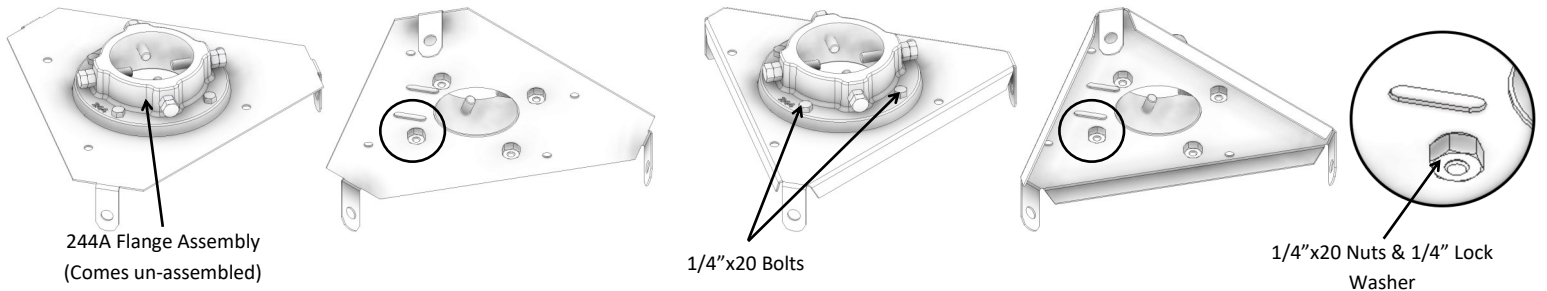
Bolt the two TMCA Assemblies to the Rotor Plates by running the 1/4"x20 Bolts through the holes of the L Bracket of the TMCA assembly and then through the slots on the Rotor Plate. Secure the assembly by using the 1/4"x20 Nuts and 1/4" Lock Washers on the bottom side of the Rotor Plate. See below images for location and orientation of hardware.



TMCA HARDWARE (Per Rotor Plate): QTY. 1 U-Bolt, QTY. 4 5/16"-18x20 Nuts, QTY. 1 L-Bracket, QTY. 1 Mast Clamp

b) Attaching 244A Flange to the Rotor Plates

Bolt the two 244A Flanges to the Rotor Plates by running the 1/4"x20 bolts through the four holes in the 244A Flange, and then through the matching holes on the Rotor Plate. Secure the assembly by using the 1/4"x20 Nuts and 1/4" Lock Washers on the bottom side of the Rotor Plate. See below images for location and orientation of hardware.

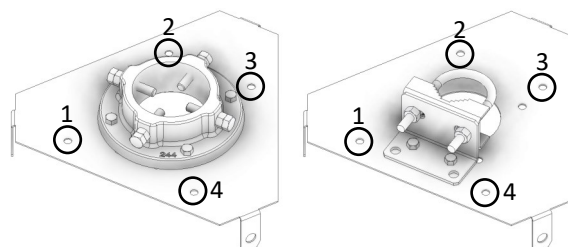


244A FLANGE HARDWARE (Per Rotor Plate): QTY. 1 244A Flange, QTY. 4 5/16"-18 Bolts, QTY. 4 5/16"-18 Nuts

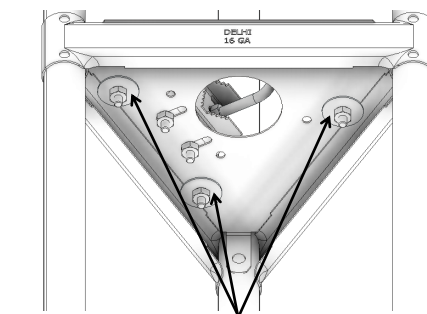
Step 2: Attaching the Middle Rotor Plate to the Tower Section

a) Place the Middle Rotor Plate onto the 5th set of Cross Braces, with the bent tabs facing downwards and the Mounting Hardware on top (TMCA Assembly or 244A Flange). See the image to the right for more information.

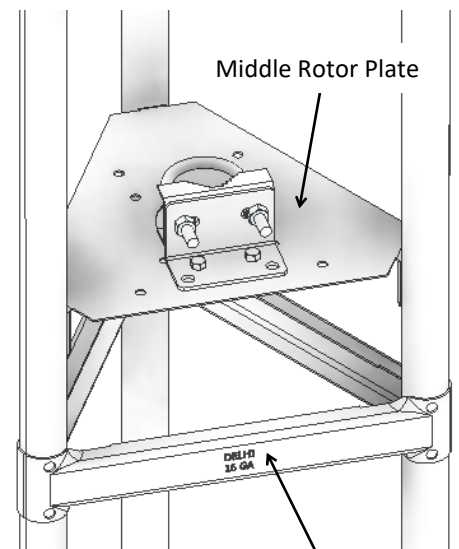
b) Place the 1/4"x20 Bolts through holes identified below. Slide an Oversized Washer (OD 1.25"), 1/4" Lock Washer and then a 1/4"x20 Nut onto each 1/4"x20 Bolts. Ensuring the Oversized Washer and Rotor Plate clamp around the edges of the Cross Braces. See below images for location and orientation of hardware.



Step 2b: Location of 1/4"x20 Bolts



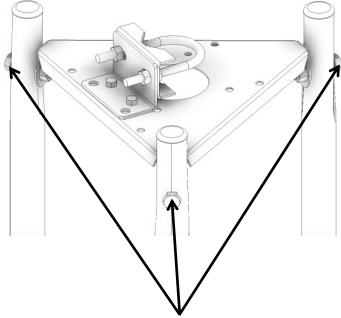
Step 2b: Clamping down Rotor Plate using Oversized Washer, 1/4" Lock Washer and 1/4"x20 Nut



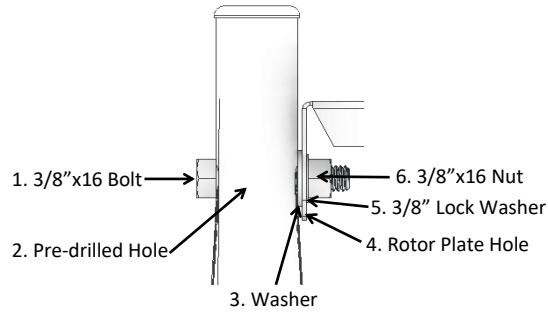
Step 2a: Sliding the Middle Rotor Plate into Place

Step 3: Attaching the Top Rotor Plate to the Tower Section

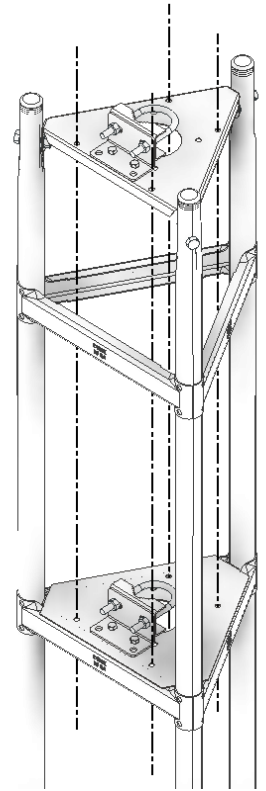
a) Attach the Top Rotor Plate by placing a 3/8"x16 Bolt through the Pre-Drilled Hole in the tower section itself, through the Washer and then through the holes located on the bent portion of the Rotor Plate. Secure using a 3/8" Lock Washer and 3/8"x16 Nut. **Note:** When placing the Top Rotor Plate, ensure that it is in the same orientation as the Middle Rotor Plate. See images below and to the right for reference.



Step 3a: Location of Bolts and other Hardware



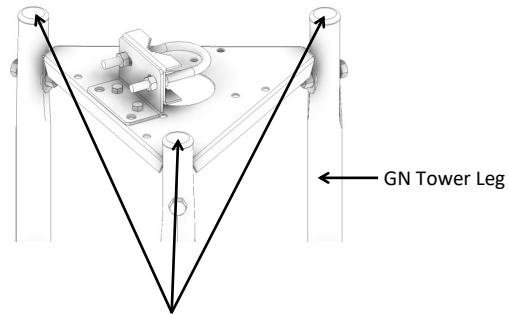
Step 3a: Order of Mounting Hardware



Step 3a: Orientation of Rotor Plates

Step 4: Adding the Caps

a) Using a Rubber Mallet, hammer in the plugs into the top of each GN Tower Leg. See below image for location of plugs.



Step 3a: Location of Caps

Tools Required:

- a) QTY. 2: 9/16" wrenches
- b) QTY. 1: 7/16" wrench
- c) QTY. 2: 1/2" wrenches
- d) QTY. 1: Rubber Mallet