

NON-Penetrating Roof Mounts



Features

- 2 gauges of pre-galvanized steel frames
- Accepts our Wade Pop-up masts for added height (guying required)
- Stabilizing white mats available to protect the mounting surface

Benefits

- Rigid construction will withstand harsh elements
- No anchoring necessary
- Uses both cinder blocks & patio stones

Applications

- Inexpensive industrial, commercial & rural wireless communications
- Video surveillance

[Watch our NPRM Video](#)

HALF BASE MODELS

- Base size: 48" x 30"
- 2" OD 5 foot mast included

NPRM-1/2-LD-5
(5' mast)



FULL BASE MODELS

- Base size of 48" x 48"
- Accept up to 2 1/2" mast (mast not included)
- Minimum mast height of 54 inches
- NPRM-2 uses 244A Mast Clamp
- NPRM-3 uses U-Bolts
- NPRM-2 has 14 gauge steel frame
- NPRM-3 made with 16 gauge
- Courier shippable



NPRM-2



NPRM-3

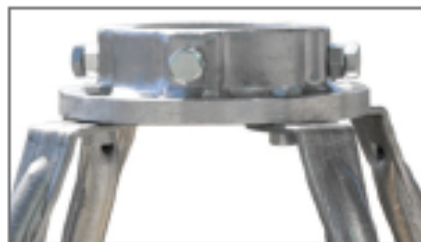
NON-Penetrating Roof Mounts



FULL BASE MODELS



NPRM-2
14 Gauge Steel



The NPRM-2
uses a top and
base mast clamp

Full Base Models

- Base Size: 48" x 48"
- Accept up to 2½" mast
- Minimum mast height of 54"
- Courier shippable
- Mast not included
- Shipping Weights

NPRM-2 - 47 lbs
NPRM-3 - 30 lbs



NPRM-3
16 Gauge Steel



The NPRM-3 uses
a top and base
U-bolt and bracket